



ЦМО

От идеи до изделия — один шаг

MINI CATALOG

Telecommunications
and electrical
equipment

www.cmo.ru

Your Pocket Assistant

Sustainable growth and development!



2013



2008

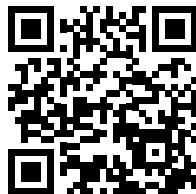


2001



Catalog

www.cmo.ru/catalog



Where to buy

www.cmo.ru/buy

www.cmo.ru

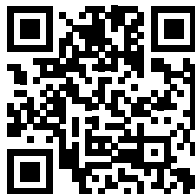
Content

Telecommunications equipment	
Floor telecommunications cabinets	4
Wall-mounted telecommunications cabinets	6
Open racks	8
Vandal-proof cabinets	10
Weatherproof cabinets	12
Wall-mounted brackets	14
Cabinets for installation of optical devices and telephony	16
Electrical cabinets IP55, IP65	18
Contacts	



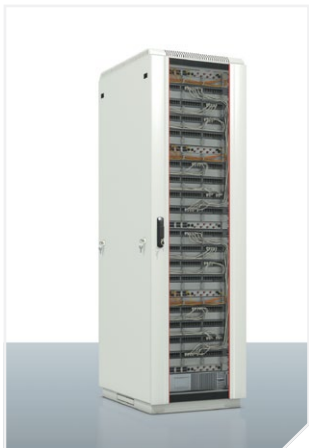
Price

www.cmo.ru/catalog/price



Your ideas

www.cmo.ru/idea



19" floor cabinets, universal

Height (U)

18, 22, 27, 33, 38, 42, 47

Width (mm)

600, 800

Depth (mm)

600, 800, 1000

Usable depth (mm)

480, 680, 880

Universal telecommunications cabinets for installation of a variety of active and passive equipment. A wide range of modifications allows you to create comprehensive solutions of any complexity.



Server cabinets

Height (U)

33, 42, 45

Width (mm)

600, 800

Depth (mm)

1000, 1200

Usable depth (mm)

850, 1050

Multi-purpose telecommunications cabinets for installation of a variety of active and passive equipment. A wide range of modifications allows you to create comprehensive solutions of any complexity.



Server cabinets, Prof

Height (U)

42, 45*, 48

Width (mm)

600, 800*

Depth (mm)

930, 1130

Usable depth (mm)

690, 890

Cabinets to place the equipment in server rooms and data centers. Provided pre-assembled, have a special design, optimal configuration and increased static load capacity.



Cross cabinets

Height (U)

33, 42

Width (mm)

800

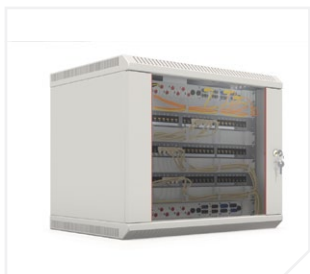
Depth (mm)

800

Usable depth (mm)

580

Cross cabinets are characterized by easy switching of a large number of cables. Easy to assemble, install and place active and passive equipment.



19" metal wall-mounted cabinets

Height (U)

6, 9, 12, 15

Width (mm)

600

Depth (mm)

300, 480, 650

Usable depth (mm)

250, 425, 605

Standard wall telecommunications cabinets. Do not require assembly, have a metal welded structure. Very convenient if you want to organize a network in a short time that does not require frequent maintenance and installation of additional equipment.



Wall-mounted cabinets, demountable

Height (U)

6, 9, 12, 15, 18

Width (mm)

600

Depth (mm)

350, 520, 650

Usable depth (mm)

281, 456, 581

Wall-mounted cabinets have simplified demountable structure that includes only 5 elements: roof, side walls, floor, and door. Supplied in a compact flat package, need minimal space during storage and transportation. Easy to assemble. Ideal for organization of networks in buildings where there may be difficulties in the delivery and storage of nonseparable cabinets.



Wall-mounted cabinets, removable walls

Height (U)

9, 12, 15

Width (mm)

600

Depth (mm)

520, 650

Usable depth (mm)

456, 581

These telecommunications cabinets have a frame demountable structure. Access for the installation and switching is provided from four sides. Removable side walls allow you to quickly maintain the equipment. ShRN-M cabinets are suitable for organization of networks, requiring frequent maintenance, re-arrangement and adding active and passive equipment.



Sectional (kick panel) wall-mounted cabinets

Height (U)

6, 9, 12, 15

Width (mm)

600

Depth (mm)

520

Usable depth (mm)

456

These wall-mounted cabinets combine the convenience and efficiency of the installation, as they have a two-section nonseparable structure and provide easy access to installed equipment. Cabinets consist of hinged and assembly sections. Sections are fixed by a point lock. The design allows an easy access to the rear of the equipment.



19" racks, single frame

Height (U)

24, 33, 38, 42, 47, 49

Width (mm)

620

Depth (mm)

600

Multi-purpose one-frame racks.



19" racks, double frame

Height (U)

24, 33, 38, 42, 47, 49

Width (mm)

620

Depth (mm)

800

Usable depth (mm)

450/580/620/750

Multi-purpose depth-adjustable two-frame racks.



19" server racks

Height (U)

33, 38, 42, 45

Width (mm)

560

Depth (mm)

770, 1035, 1030, 1280

Usable depth (mm)

750, 1000

Racks to host server hardware.



19" cross racks

Height (U)

24, 33, 38, 42, 47, 49

Width (mm)

560

Depth (mm)

360

Racks for installation of cross-connect equipment



19" wall-mounted cabinets, vandal-proof

Height (U)

9, 12, 15

Width (mm)

600

Depth (mm)

520

Usable depth (mm)

475

Cabinets have increased protection against penetration. Door opening angle - 180 degrees, which allows you to conveniently install and maintain equipment. The design is reinforced with stub-in channel bars.



19" wall-mounted cabinets, vandal-proof (panel type)

Height (U)

6, 9

Width (mm)

600

Depth (mm)

500

Usable depth (mm)

475

Compact cabinet with increased protection. The vertical arrangement of the equipment allows you to reduce the space needed to install the cabinet. Sliding door is convenient for installation and maintenance of equipment.



19" floor cabinets, vandal-proof

Height (U)

18, 22

Width (mm)

600

Depth (mm)

520

Usable depth (mm)

475

Designed to host a large amount of equipment in places with reduced access control. Has a high resistance to deformation and cracking.

For ease of installation and switching of equipment a wide range of accessories is provided. Cabinets are made in accordance with the requirements of IEC 60 297 Dimensions of mechanical structures of the 482.6mm (19 in) series



Floor cabinets, weatherproof, 2 sections

Height (U)

6, 9, 12, 15, 18, 21, 24

Width (mm)

640, 800

Depth (mm)

600, 800, 1000

Usable depth (mm)

540, 740, 940

All-weather outdoor telecommunications cabinets with two sections: telecommunications and battery sections. Access to the equipment through the front door.



Floor cabinets, weatherproof, 3 sections

Height (U)

6, 9, 12, 15, 18, 21, 24

Width (mm)

600, 800

Depth (mm)

600, 800, 1000

Usable depth (mm)

540, 740, 940

All-weather outdoor cabinets with three sections: telecommunications, battery and side electrical sections. Access to the equipment through the front and side door.



Floor cabinets, weatherproof, 4 sections

Height (U)

6, 9 12, 15, 18, 21, 24

Width (mm)

1000, 1200

Depth (mm)

600, 800, 1000

Usable depth (mm)

540, 740, 940

All-weather outdoor cabinets with four sections: telecommunications, battery and two side electrical sections. Cabinets are manufactured by advance order.

ShTV series general specifications

Vandal-proof design.

Steel thickness - 2 mm.

Latch lock.

Protection rating IP55, with climatic equipment IP54.

Insulator thickness - 10-20 mm.

Grounding system.

Climatic operation conditions:

Ambient temperature: -50 °C to +60 °C.

Relative humidity: 5-100%.

Humidity inside the cabinet: 10-75%.

Atmospheric pressure: 62 - 101 kPa.

Depending on the requirements for the equipment operation the following shall be installed:

- Additional protection against unauthorized access and vandalism
- Temperature and humidity regulation system
- Climatic air-conditioning system
- Access and smoke content control inside the cabinet
- Earthing and lighting systems

The design of ShTV cabinets depends on the project requirements. We can manufacture customized configuration according to the customer specifications. Cabinets are supplied assembled and packed in the corrugated cardboard package.



19" brackets, horizontal

Height (U)

3, 6, 9, 12

Width (mm)

512

Depth (mm)

300-500

Usable depth (mm)

300-450

19" standard structures for horizontal placement of equipment with 300-450 mm depth-adjustable front brackets.

Brackets have a fully demountable structure consisting of five elements. Easy to assemble. Have increased stiffness due to the fasteners. Gray RAL 7035, black RAL 9005.



19" swing brackets

Height (U)

12, 15, 18, 22

Width (mm)

510

Depth (mm)

465

Usable depth (mm)

350

Brackets to place a large amount of equipment that requires frequent maintenance. The KNO-RP front frame opens for easy access to the rear of the equipment.

Brackets consist of a swing frame and base. The frame has a full-metal welded design and is fixed to the base by latches at the top and bottom. Black RAL 9005.



19" power brackets

Height (U)

12, 15, 18, 22, 27

Width (mm)

516

Depth (mm)

460

Usable depth (mm)

400

Heavy-duty wall-mounted brackets to place heavy equipment.

Brackets have a fully demountable structure consisting of four elements: roof, floor and two vertical guides. Easy to assemble. Due to the fasteners brackets have a high load capacity. Black RAL 9005.



19" brackets, vertical

Height (U)

2, 3, 4

Width (mm)

500

Depth (mm)

96, 140, 185

Brackets for vertical placement of equipment.

Provide compact placement of active and passive equipment of any depth.

Brackets have a full-metal design and do not require assembly. The rear wall has holes for fixing to the wall. Vertical installation allows the compact placement of equipment of any depth. Black RAL 9005.



Wall-mounted optic box, 8 ports

Height (U)

290

Width (mm)

270

Depth (mm)

60

Multi-purpose wall box for the organization of an optical cable. Designed to be mounted on a wall. Very compact. The case is made of metal and the door is fixed by the lock.



Wall-mounted optic box, 16/24 ports

Height (U)

420

Width (mm)

420

Depth (mm)

50

Multi-purpose medium-size box for the organization of an optical cable. Designed to be mounted on a wall. The case is made of metal.



19" optical switching panel

Height (U)

290

Width (mm)

270

Depth (mm)

60

19" optical panel is designed to be mounted in the cabinets and open racks. The case is made of metal and has a removable top cover.



Telephony mounting cabinets

Multi-purpose cabinets for installation of 3, 5, 10, 20 and 30 LSA-PLUS (KRONE) punch down blocks. Designed to be mounted on a wall. Made of metal. Protection rating IP20, IP55.

The manufacturer has the right to make changes to the product without impairing its functional characteristics.



Floor electrical cabinets

Multi-purpose floor cabinets designed for installation of electrical equipment.

Environmental protection, protection rating IP55.

The line includes cabinets with one and two front doors.

Standard cabinet includes: case, door, door stop, rear wall and zinc-plated mounting plate.

Additional cabinets can be equipped with side walls and plinths of different heights.



Wall-mounted electric cabinets

Multi-purpose wall-mounted cabinets are designed for installation of electrical equipment. Cabinets have environmental protection and protection against unauthorized access to installed equipment.

Protection rating IP55, IP65. The line includes both compact models and large-sized cabinets.

Standard cabinet includes: case, door, zinc-plated mounting plate, grounding set and set of brackets for installation.

An idea and a product are just one step apart!

Thank you for your choice! We guarantee reliable operation of the purchased CMO equipment provided that proper operation conditions are met.

Due to the constant interaction with you, we improve standard products and manufacture new products in demand. We develop, plan and master the advanced fields, increase our production capacity, and improve our quality control system. This is a guarantee that the CMO products will always meet the highest international standards and current market requirements.

If during the process of the equipment assembling or operating you come up with any idea on how to do this or that CMO product better, we look forward to seeing your idea (project or development) on a special page of the website www.cmo.ru/idea, or e-mail idea@cmo.ru. Our designers will necessarily turn your idea into reality.


Participate in the polls, leave feedbacks and comments, use technical support and get the latest news from CMO on the website www.cmo.ru.

We take care of our Clients, appreciate our Partners, and respect our Competitors.

We wish all of you well-being, growth and prosperity!

Keep in touch with us:

 vkontakte.ru/id75241100

 twitter.com/CMO_Remer

 facebook.com/www.cmo.ru

 youtube.com/user/LavrentyevCMO



Your ideas:
www.cmo.ru/idea

PRODUCTION COMPANY CMO



Russia

15 7th Kozhukhovskaya Street, Building 1
Moscow, Russia, 115193
Russia
Phone: +7 (495) 677-11-67, 677-11-68
Fax: +7 (495) 679-28-33
E-mail: cmo@cmo.ru



Belarus

67A Minskaya Street, Belarus, Kolodishchi Village,
Minsk District
Minsk Oblast, Republic of Belarus, 223051
Belarus
Phone: +375 (17) 500-00-00
Fax: +375 (17) 508-12-66
E-mail: info@cmo.ru

